



**Chicago  
Pneumatic™**

Code
<b>2200780022 01</b>
Edizione / Edition / Edition / Ausgabe / Edición
<b>01/03/2011</b>

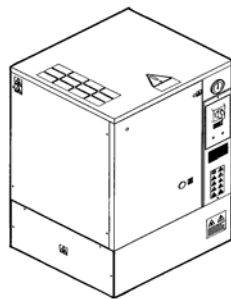
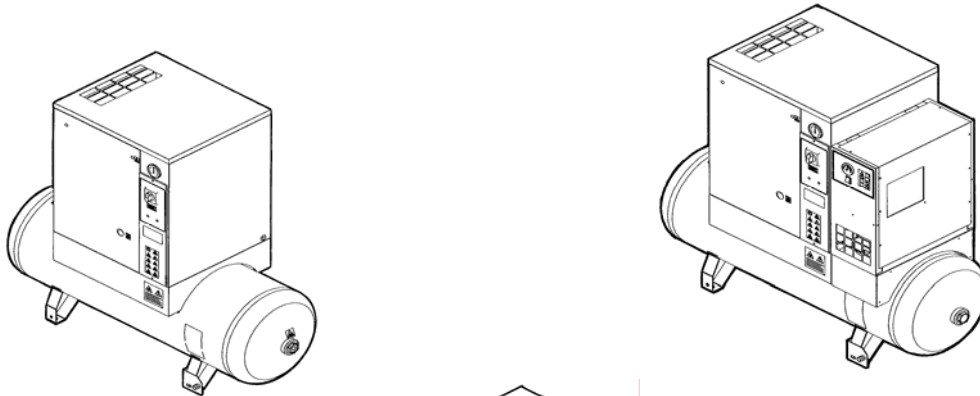
## QRS HP/HPD (cULus)

SPARES PARTS LIST

*With service kit*

**HP 3 - 5 - 7,5  
kW 2,2 - 3,7 - 5,5**

INDUSTRIAL COMPRESSORS



# QRS HP/HPD (cULus)

## PARTS LIST

### HP 3 - 5 - 7,5 kW 2,2 - 3,7 - 5,5

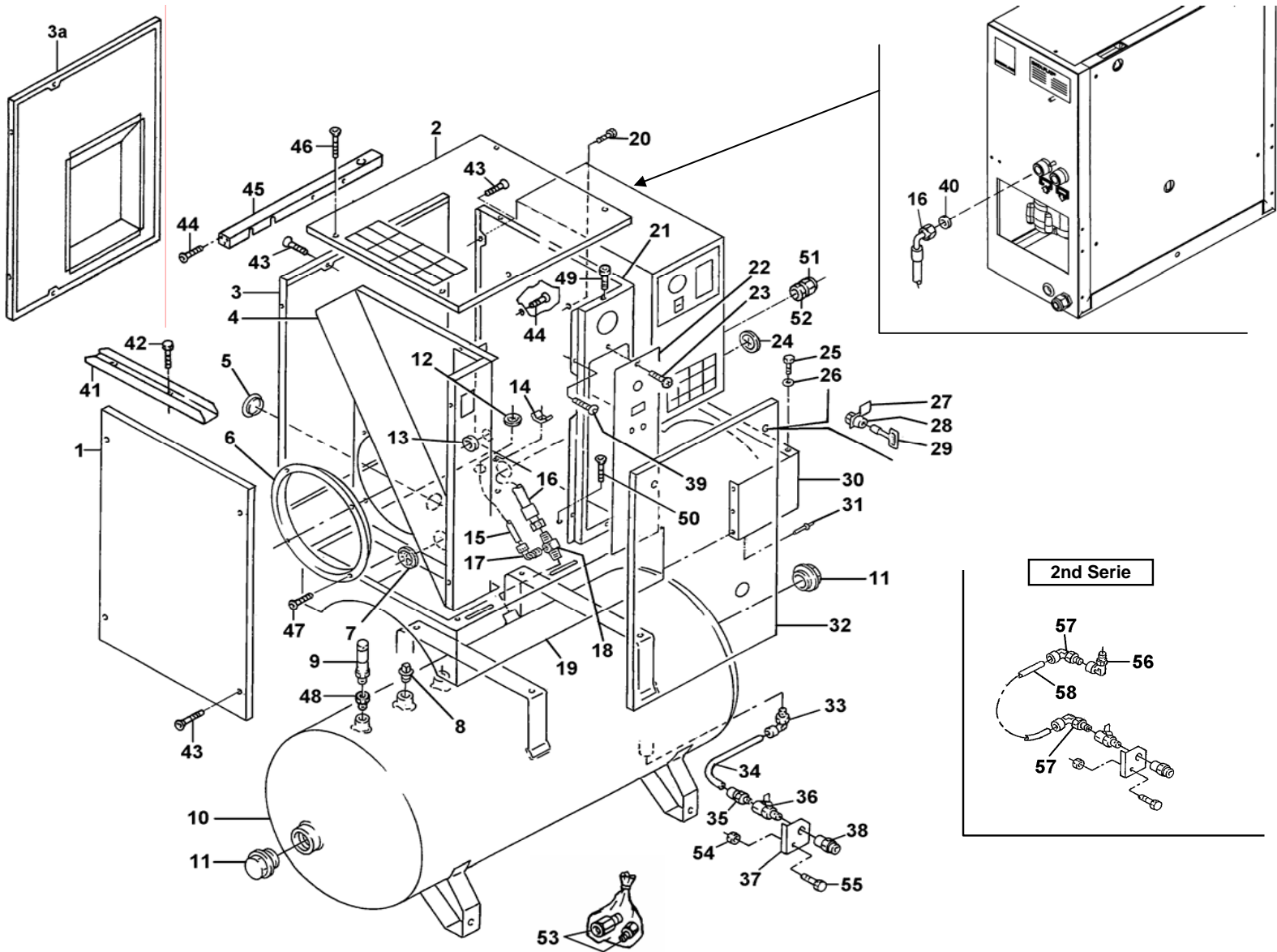
#### INDUSTRIAL COMPRESSORS

Code	HP / kW	bar	V Compressor	Air Receiver	V Dryer
4152 0101 60	3 / 2,2	8	230/1/60Hz		
4152 0101 61	3 / 2,2	10	230/1/60Hz		
4152 0101 66	3 / 2,2	8	230/1/60Hz	200Lit.	
4152 0101 67	3 / 2,2	10	230/1/60Hz	200Lit.	
4152 0101 72	3 / 2,2	8	230/1/60Hz	200Lit.	115/1/60Hz
4152 0101 73	3 / 2,2	10	230/1/60Hz	200Lit.	115/1/60Hz
4152 0101 78	3 / 2,2	8	208-230/460/3/60Hz		
4152 0101 79	3 / 2,2	10	208-230/460/3/60Hz		
4152 0101 84	3 / 2,2	8	208-230/460/3/60Hz	200Lit.	
4152 0101 85	3 / 2,2	10	208-230/460/3/60Hz	200Lit.	
4152 0101 90	3 / 2,2	8	208-230/460/3/60Hz	200Lit.	115/1/60Hz
4152 0101 91	3 / 2,2	10	208-230/460/3/60Hz	200Lit.	115/1/60Hz
4152 0102 65	3 / 2,2	8	575/3/60Hz		
4152 0101 96	3 / 2,2	10	575/3/60Hz		
4152 0102 01	3 / 2,2	8	575/3/60Hz	200Lit.	
4152 0102 02	3 / 2,2	10	575/3/60Hz	200Lit.	
4152 0102 07	3 / 2,2	8	575/3/60Hz	200Lit.	115/1/60Hz
4152 0102 08	3 / 2,2	10	575/3/60Hz	200Lit.	115/1/60Hz
4152 0101 62	5 / 3,7	8	230/1/60Hz		
4152 0101 63	5 / 3,7	10	230/1/60Hz		
4152 0101 68	5 / 3,7	8	230/1/60Hz	200Lit.	
4152 0101 69	5 / 3,7	10	230/1/60Hz	200Lit.	
4152 0101 74	5 / 3,7	8	230/1/60Hz	200Lit.	115/1/60Hz
4152 0101 75	5 / 3,7	10	230/1/60Hz	200Lit.	115/1/60Hz
4152 0101 80	5 / 3,7	8	208-230/460/3/60Hz		
4152 0101 81	5 / 3,7	10	208-230/460/3/60Hz		
4152 0101 86	5 / 3,7	8	208-230/460/3/60Hz	200Lit.	
4152 0101 87	5 / 3,7	10	208-230/460/3/60Hz	200Lit.	
4152 0101 92	5 / 3,7	8	208-230/460/3/60Hz	200Lit.	115/1/60Hz
4152 0101 93	5 / 3,7	10	208-230/460/3/60Hz	200Lit.	115/1/60Hz
4152 0101 97	5 / 3,7	8	575/3/60Hz		
4152 0101 98	5 / 3,7	10	575/3/60Hz		
4152 0102 03	5 / 3,7	8	575/3/60Hz	200Lit.	
4152 0102 04	5 / 3,7	10	575/3/60Hz	200Lit.	
4152 0102 09	5 / 3,7	8	575/3/60Hz	200Lit.	115/1/60Hz
4152 0102 10	5 / 3,7	10	575/3/60Hz	200Lit.	115/1/60Hz
4152 0101 64	7,5 / 5,5	8	230/1/60Hz		
4152 0101 65	7,5 / 5,5	10	230/1/60Hz		
4152 0101 70	7,5 / 5,5	8	230/1/60Hz	200Lit.	
4152 0101 71	7,5 / 5,5	10	230/1/60Hz	200Lit.	
4152 0101 76	7,5 / 5,5	8	230/1/60Hz	200Lit.	115/1/60Hz
4152 0101 77	7,5 / 5,5	10	230/1/60Hz	200Lit.	115/1/60Hz
4152 0101 82	7,5 / 5,5	8	208-230/460/3/60Hz		
4152 0101 83	7,5 / 5,5	10	208-230/460/3/60Hz		
4152 0101 88	7,5 / 5,5	8	208-230/460/3/60Hz	200Lit.	
4152 0101 89	7,5 / 5,5	10	208-230/460/3/60Hz	200Lit.	
4152 0101 94	7,5 / 5,5	8	208-230/460/3/60Hz	200Lit.	115/1/60Hz
4152 0101 95	7,5 / 5,5	10	208-230/460/3/60Hz	200Lit.	115/1/60Hz
4152 0101 99	7,5 / 5,5	8	575/3/60Hz		
4152 0102 00	7,5 / 5,5	10	575/3/60Hz		
4152 0102 05	7,5 / 5,5	8	575/3/60Hz	200Lit.	
4152 0102 06	7,5 / 5,5	10	575/3/60Hz	200Lit.	
4152 0102 11	7,5 / 5,5	8	575/3/60Hz	200Lit.	115/1/60Hz
4152 0102 12	7,5 / 5,5	10	575/3/60Hz	200Lit.	115/1/60Hz



DWG. NR.	<i>INDEX</i>
	DESCRIPTION
<b>1</b>	CASING - SOUND DAMPING PANELS
<b>2</b>	CASING - SOUND DAMPING PANELS (WITHOUT DRYER)
<b>3</b>	CASING - SOUND DAMPING PANELS (WITHOUT RECEIVER)
<b>4</b>	AIR/OIL TANK - SEPARATOR - AIR/OIL COOLER
<b>5</b>	COMPRESSED AIR OUTLET (WITHOUT RECEIVER)
<b>6</b>	SCREW COMPRESSOR AND ELECTRIC MOTOR METAL SUPPORT - TRANSMISSION - INTAKE FILTER
<b>7</b>	UNLOADER FOR SINGLE-PHASE "230V 60Hz"
<b>8</b>	ELECTRIC BOARD CONTROL PANEL
<b>9</b>	ELECTRIC BOARD CONTROL PANEL "230V 60Hz"
<b>10</b>	AIR DRYER
<b>11</b>	LABELS
<b>12</b>	SERVICE KITS

Dwg. 1 Casing - Sound-damping panels



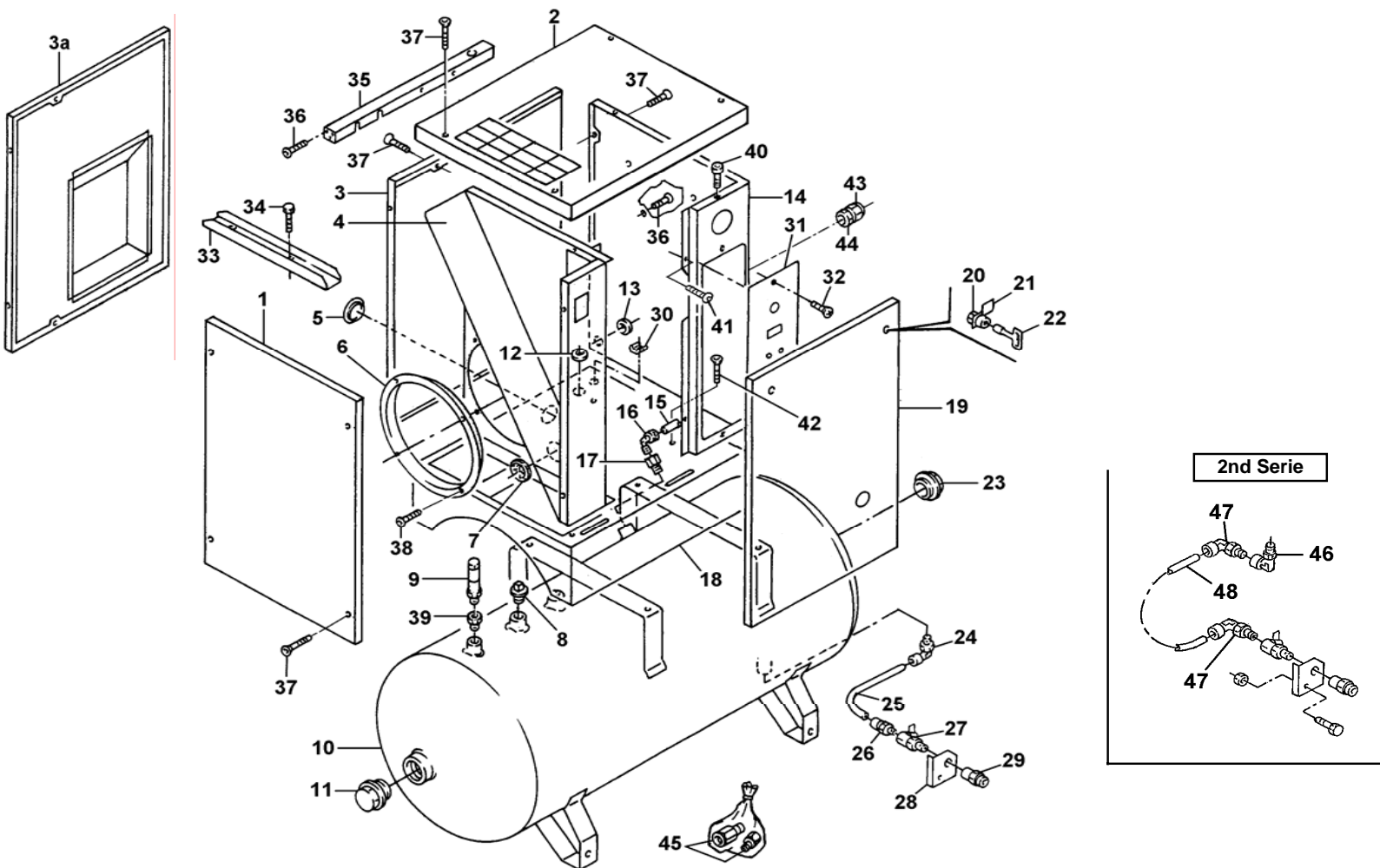


Dwg. 1		Casing - Sound-damping panels																											DESCRIPTION							
		Q.tà - Q.ty - Q.te - Anz. - Cant.																																		
Ref. No	Part. num.	Note	HP 3 - kW 2,2						HP 5 - kW 3,7						HP 7,5 - kW 5,5																					
			4152 0101 72	4152 0101 73	4152 0101 90	4152 0101 91	4152 0102 07	4152 0102 08	4152 0101 74	4152 0101 75	4152 0101 92	4152 0101 93	4152 0102 09	4152 0102 10	4152 0101 76	4152 0101 77	4152 0101 94	4152 0101 95	4152 0102 11	4152 0102 12																
44	0215 0003 91		8	8								8	8	8									8	8	8	8	8							SCREW		
45	2202 2609 31		1	1	1	1	1	1				1	1	1	1	1							1	1	1	1	1							STIRRUP		
46	0216 1957 75		5	5	5	5	5	5				5	5	5	5	5							5	5	5	5	5							SCREW		
47	0147 1170 03		4	4	4	4	4	4				4	4	4	4	4							4	4	4	4	4							SCREW		
48	2202 2610 89		1	1	1	1	1	1				1	1	1	1	1							1	1	1	1	1							REDUCTION		
49	0211 1246 03		1	1	1	1	1	1				1	1	1	1	1							1	1	1	1	1							SCREW		
50	0216 1957 86		4	4	4	4	4	4				4	4	4	4	4							4	4	4	4	4							SCREW		
51	0698 5141 27																						1	1	1	1	1							CABLE GLAND		
52	0697 9809 51																						1	1	1	1	1							NUT		
53	2202 2610 67		1	1	1	1	1	1				1	1	1	1	1							1	1	1	1	1							REDUCTION		
54	0266 2112 00		1	1	1	1	1	1				1	1	1	1	1							1	1	1	1	1							NUT		
55	0147 1400 03		1	1	1	1	1	1				1	1	1	1	1							1	1	1	1	1							SCREW		
56	0605 9500 42		1	1	1	1	1	1				1	1	1	1	1							1	1	1	1	1							ELBOW UNION (2nd serie)		
57	0583 8120 92		2	2	2	2	2	2				2	2	2	2	2							2	2	2	2	2							COUPLING (2nd serie)		
58	0070 6002 64		X	X	X	X	X	X				X	X	X	X	X							X	X	X	X	X							HOSE (IN METERS) (2nd serie)		



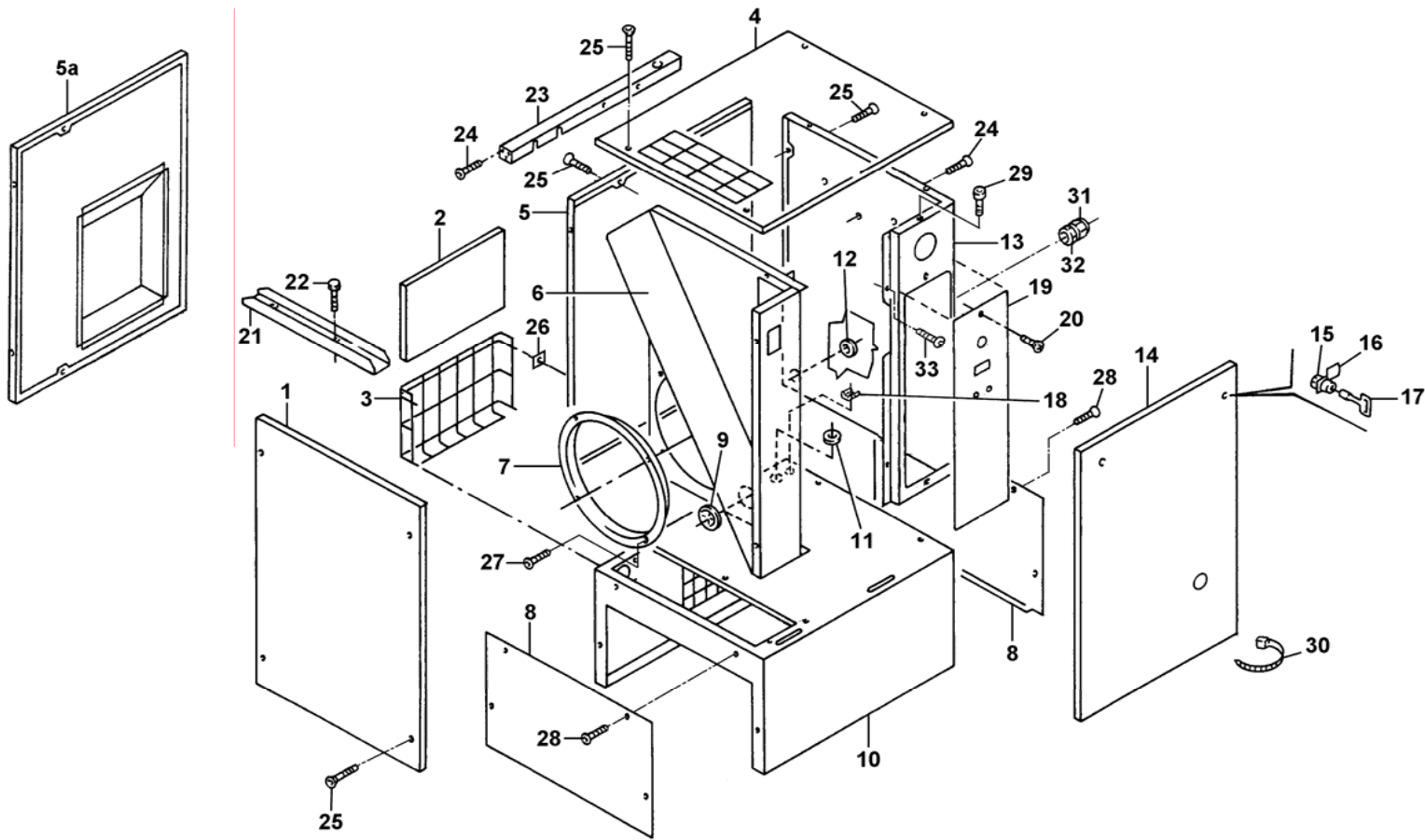


Dwg. 2 Casing - Sound-damping panels (without dryer)



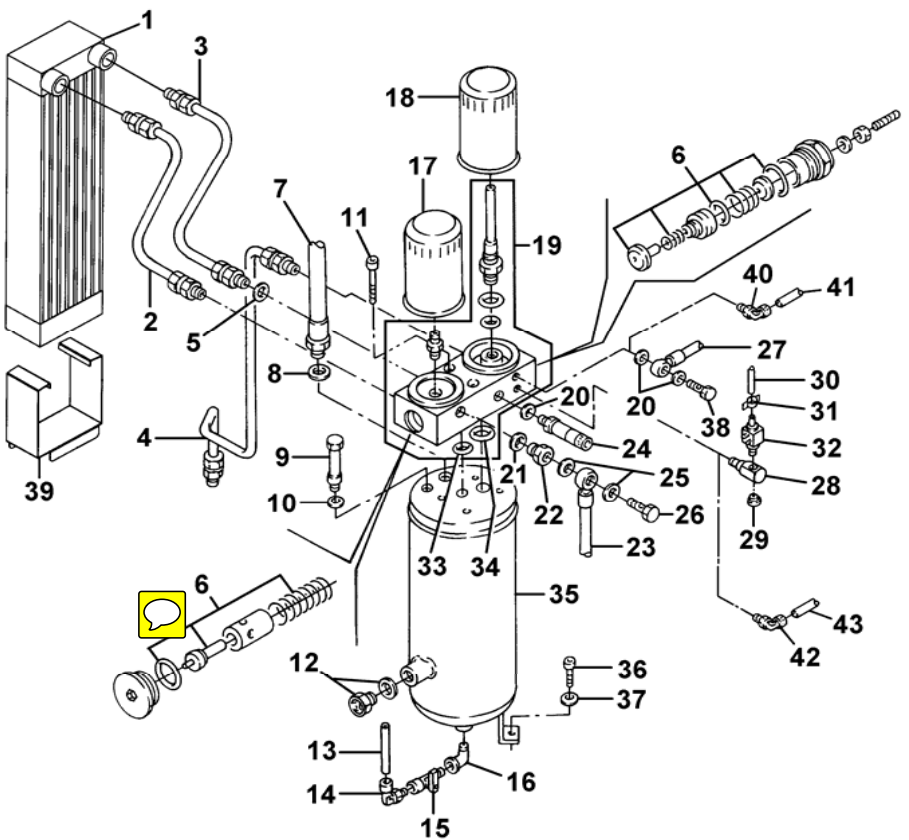


Dwg. 3 Casing - Sound-damping panels (without receiver)





Dwg. 4 Air/oil tank-separator air/oil cooler



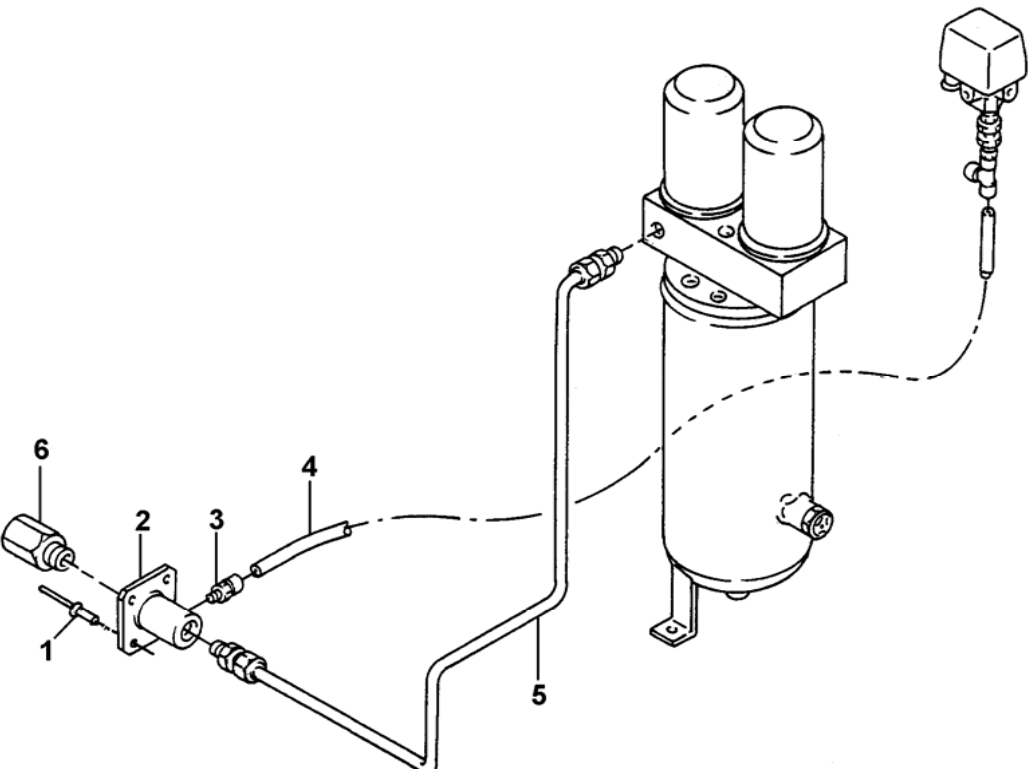






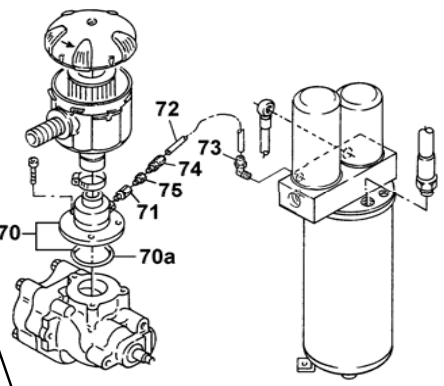
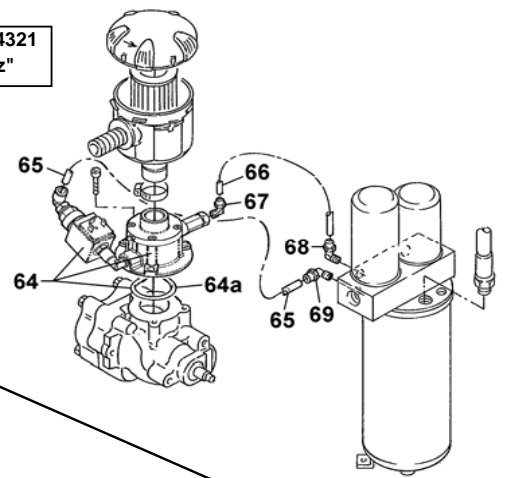


Dwg. 5 - Compressed air outlet (without receiver)

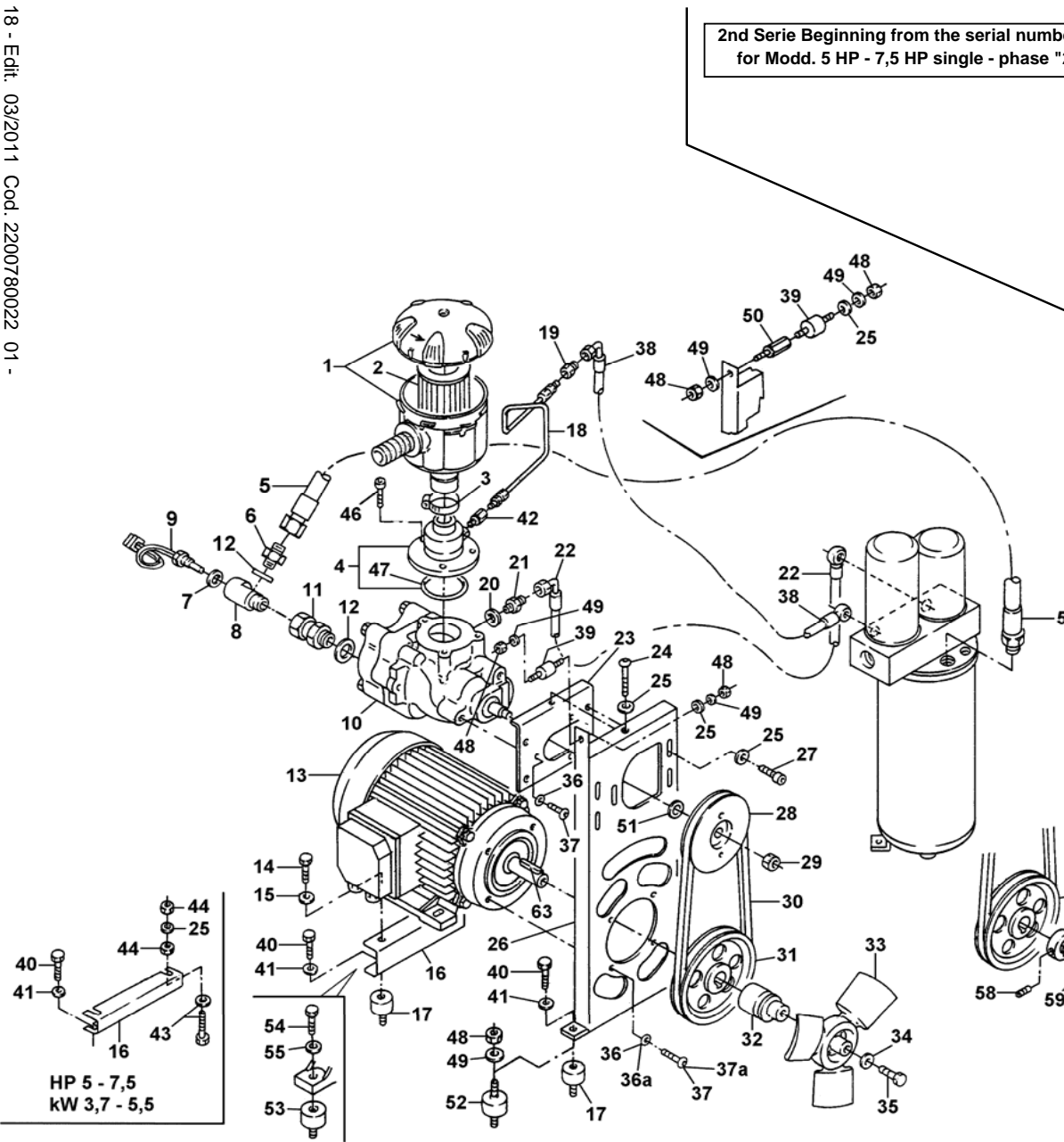




2nd Serie Beginning from the serial number CAI 464321  
for Modd. 5 HP - 7,5 HP single - phase "230V 60Hz"



2nd Serie  
for Modd. 3 HP (230V 60Hz / 208-230/460V  
60Hz / 575V 60Hz)  
for Modd. 5 HP (208-230/460V 60Hz / 575V  
60Hz)  
for Modd. 7,5 HP (208-230/460V 60Hz / 575V  
60Hz)



HP 5 - 7,5  
kW 3,7 - 5,5

# Dwg. 6

## Screw compressor and electric motor metal support-Transmission - Intake filter

Q.ty

**HP 3 - kW 2,2**

**HP 5 - kW 3,7**

DESCRIPTION

Ref. No	Part. num.	Note	Q.ty																								DESCRIPTION
			HP 3 - kW 2,2												HP 5 - kW 3,7												
1	6211 4736 00		1	1	1	1	1	1	1	1	1	1	1	1	1	1	1	1	1	1	1	1				AIR FILTER ASS.	
2	6211 4737 50		1	1	1	1	1	1	1	1	1	1	1	1	1	1	1	1	1	1	1	1	1				AIR FILTER
3	0347 6107 00		1	1	1	1	1	1	1	1	1	1	1	1	1	1	1	1	1	1	1	1	1				CLAMP
4	2202 2609 53	(B)	1	1	1	1	1	1	1	1	1	1	1	1	1	1	1	1	1	1	1	1	1				SUCTION UNIT ASS.
5	2202 2608 38		1	1	1	1	1	1	1	1	1	1	1	1	1	1	1	1	1	1	1	1	1				FLEXIBLE TUBE
6	0603 4243 02		1	1	1	1	1	1	1	1	1	1	1	1	1	1	1	1	1	1	1	1	1				NIPPLE
7	0661 1000 39		1	1	1	1	1	1	1	1	1	1	1	1	1	1	1	1	1	1	1	1	1				WASHER
8	2202 8053 00		1	1	1	1	1	1	1	1	1	1	1	1	1	1	1	1	1	1	1	1	1				TEE
9	1089 0637 16		1	1	1	1	1	1	1	1	1	1	1	1	1	1	1	1	1	1	1	1	1				TEMPERATURE SWITCH
10	1616 7103 90		1	1	1	1	1	1	1	1	1	1	1	1	1	1	1	1	1	1	1	1	1				COMPRESSOR ELEMENT
11	2200 7510 26		1	1	1	1	1	1	1	1	1	1	1	1	1	1	1	1	1	1	1	1	1				NIPPLE
12	0661 1000 43		1	1	1	1	1	1	1	1	1	1	1	1	1	1	1	1	1	1	1	1	1				WASHER
13	2202 2610 20		1	1	1	1	1	1	1	1	1	1	1	1	1	1	1	1	1	1	1	1	1				MOTOR
13	2202 9792 00																										MOTOR
13	2202 9795 00																										MOTOR
13	2202 2610 21																										MOTOR
13	2202 9793 00																										MOTOR
13	2202 9796 00																										MOTOR
14	0147 1364 03		2	2	2	2	2	2	2	2	2	2	2	2	2	2	2	2	2	2	2	2	2				SCREW
15	0300 0274 17		2	2	2	2	2	2	2	2	2	2	2	2	2	2	2	2	2	2	2	2	2				WASHER
16	2202 2609 28		1	1	1	1	1	1	1	1	1	1	1	1	1	1	1	1	1	1	1	1	1				STIRRUP
16	2202 2610 16																										STIRRUP
17	0392 1100 22		4	4	4	4	4	4	4	4	4	4	4	4	4	4	4	4	4	4	4	4	4				DAMPER
18	2202 2609 43		1	1	1	1	1	1	1	1	1	1	1	1	1	1	1	1	1	1	1	1	1				HOSE
19	2200 7506 48		1	1	1	1	1	1	1	1	1	1	1	1	1	1	1	1	1	1	1	1	1				COUPLING
20	0661 1000 38		1	1	1	1	1	1	1	1	1	1	1	1	1	1	1	1	1	1	1	1	1				WASHER
21	2202 2608 44		1	1	1	1	1	1	1	1	1	1	1	1	1	1	1	1	1	1	1	1	1				NIPPLE
22	2202 2608 39		1	1	1	1	1	1	1	1	1	1	1	1	1	1	1	1	1	1	1	1	1				FLEXIBLE TUBE
23	2202 2608 15		1	1	1	1	1	1	1	1	1	1	1	1	1	1	1	1	1	1	1	1	1				COMPR. SUPPORT
24	2200 7118 07		1	1	1	1	1	1	1	1	1	1	1	1	1	1	1	1	1	1	1	1	1				SCREW
25	0300 8019 00		6	6	6	6	6	6	6	6	6	6	6	6	6	6	6	6	6	6	6	6	6				WASHER
26	2202 2609 30		1	1	1	1	1	1	1	1	1	1	1	1	1	1	1	1	1	1	1	1	1				MOTOR SUPPORT
27	0211 1325 03		4	4	4	4	4	4	4	4	4	4	4	4	4	4	4	4	4	4	4	4	4				SCREW
28	2202 2608 50		1	1	1	1	1	1	1	1	1	1	1	1	1	1	1	1	1	1	1	1	1				PULLEY SCREW
28	2202 8320 00																										PULLEY SCREW
28	2202 2608 49																										PULLEY SCREW
29	2200 7231 30		1	1	1	1	1	1	1	1	1	1	1	1	1	1	1	1	1	1	1	1	1				NUT
30	0367 0100 56		1	1	1	1	1	1	1	1	1	1	1	1	1	1	1	1	1	1	1	1	1				BELT
30	0367 0100 55		1	1	1	1	1	1	1	1	1	1	1	1	1	1	1	1	1	1	1	1	1				BELT
30	0367 0100 63		1	1	1	1	1	1	1	1	1	1	1	1	1	1	1	1	1	1	1	1	1				BELT
31	2202 2609 92		1	1	1	1	1	1	1	1	1	1	1	1	1	1	1	1	1	1	1	1	1				PULLEY MOTOR
31	2202 2609 89		1	1	1	1	1	1	1	1	1	1	1	1	1	1	1	1	1	1	1	1	1				PULLEY MOTOR
31	2202 2608 47																										PULLEY
31	2202 2610 34																										PULLEY
32	2202 2610 17		1	1	1	1	1	1	1	1	1	1	1	1	1	1	1	1	1	1	1	1	1				FAN HUB
33	2200 9005 34		1	1	1	1	1	1	1	1	1	1	1	1	1	1	1	1	1	1	1	1	1				FAN

Cod. 2200780022\_01 - Edit. 03/2011 - 19



Dwg. 6

Screw compressor and electric motor metal support-Transmission - Intake filter

Q.ty

HP 7,5 - kW 5,5

DESCRIPTION

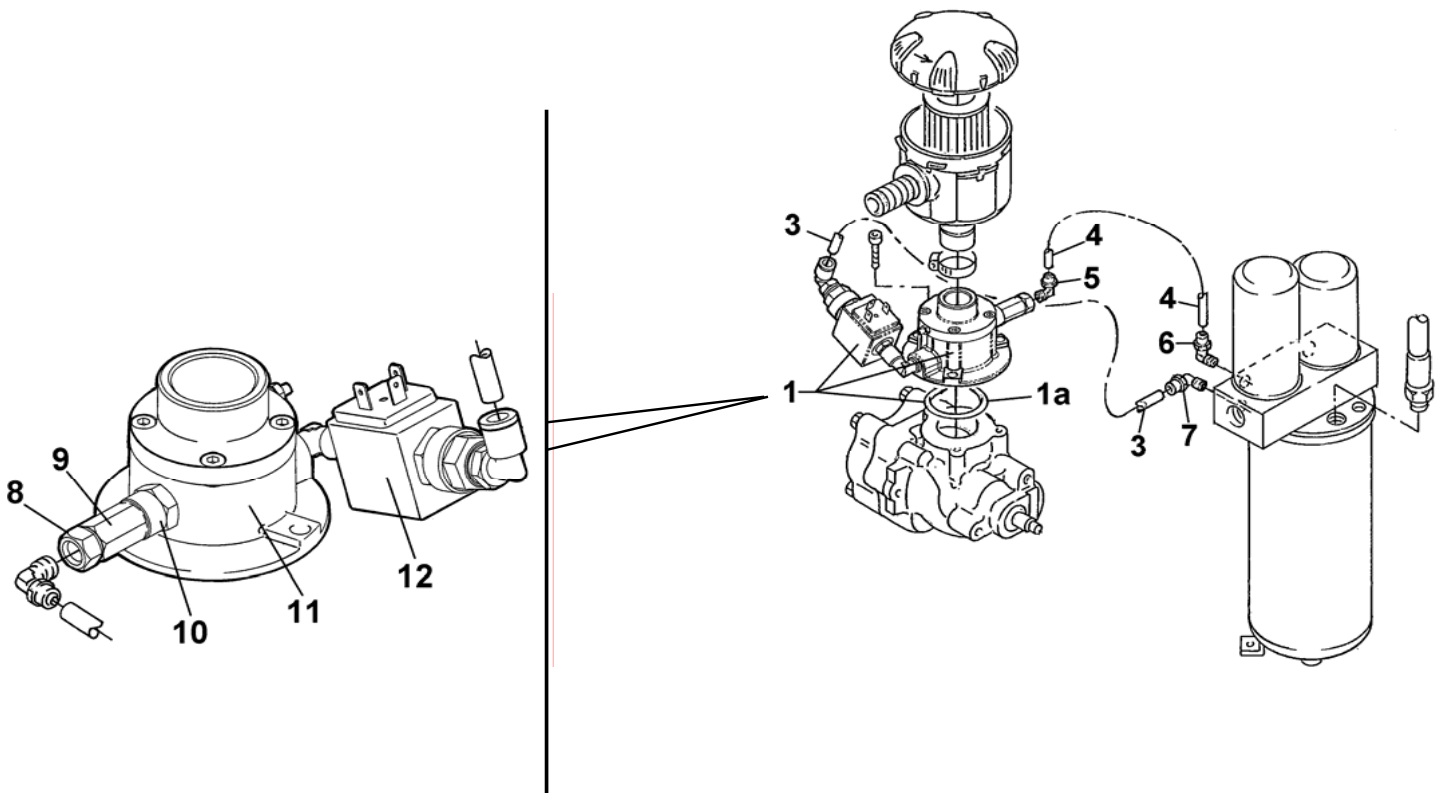
Ref. No	Part. num.	Note	4152 0101 64	4152 0101 65	4152 0101 70	4152 0101 71	4152 0101 76	4152 0101 77	4152 0101 82	4152 0101 83	4152 0101 88	4152 0101 89	4152 0101 94	4152 0101 95	4152 0101 99	4152 0102 00	4152 0102 05	4152 0102 06	4152 0102 11	4152 0102 12																		
1	6211 4736 00		1	1	1	1	1	1	1	1	1	1	1	1	1	1	1	1	1	1																		AIR FILTER ASS.
2	6211 4737 50		1	1	1	1	1	1	1	1	1	1	1	1	1	1	1	1	1	1	1																AIR FILTER	
3	0347 6107 00		1	1	1	1	1	1	1	1	1	1	1	1	1	1	1	1	1	1	1																CLAMP	
4	2202 2609 53	(B)	1	1	1	1	1	1	1	1	1	1	1	1	1	1	1	1	1	1	1															SUCTION UNIT ASS.		
5	2202 2608 38		1	1	1	1	1	1	1	1	1	1	1	1	1	1	1	1	1	1	1															FLEXIBLE TUBE		
6	0603 4243 02		1	1	1	1	1	1	1	1	1	1	1	1	1	1	1	1	1	1	1															NIPPLE		
7	0661 1000 39		1	1	1	1	1	1	1	1	1	1	1	1	1	1	1	1	1	1	1															WASHER		
8	2202 8053 00		1	1	1	1	1	1	1	1	1	1	1	1	1	1	1	1	1	1	1															TEE		
9	1089 0637 16		1	1	1	1	1	1	1	1	1	1	1	1	1	1	1	1	1	1	1															TEMPERATURE SWITCH		
10	1616 7103 90		1	1	1	1	1	1	1	1	1	1	1	1	1	1	1	1	1	1	1															COMPRESSOR ELEMENT		
11	2200 7510 26		1	1	1	1	1	1	1	1	1	1	1	1	1	1	1	1	1	1	1															NIPPLE		
12	0661 1000 43		1	1	1	1	1	1	1	1	1	1	1	1	1	1	1	1	1	1	1															WASHER		
13	2202 7485 00		1	1	1	1	1	1																												MOTOR		
13	2202 9794 00								1	1	1	1	1	1																							MOTOR	
13	2202 9797 00															1	1	1	1	1	1															MOTOR		
16	2202 2610 16								1	1	1	1	1	1	1	1	1	1	1	1	1																STIRRUP	
17	0392 1100 22								4	4	4	4	4	4	4	4	4	4	4	4	4																DAMPER	
18	2202 2609 43		1	1	1	1	1	1	1	1	1	1	1	1	1	1	1	1	1	1	1																HOSE	
19	2200 7506 48		1	1	1	1	1	1	1	1	1	1	1	1	1	1	1	1	1	1	1																COUPLING	
20	0661 1000 38		1	1	1	1	1	1	1	1	1	1	1	1	1	1	1	1	1	1	1																WASHER	
21	2202 2608 44		1	1	1	1	1	1	1	1	1	1	1	1	1	1	1	1	1	1	1																NIPPLE	
22	2202 2608 39		1	1	1	1	1	1	1	1	1	1	1	1	1	1	1	1	1	1	1																FLEXIBLE TUBE	
23	2202 2608 15		1	1	1	1	1	1	1	1	1	1	1	1	1	1	1	1	1	1	1																COMPR. SUPPORT	
24	2200 7118 07		1	1	1	1	1	1	1	1	1	1	1	1	1	1	1	1	1	1	1																SCREW	
25	0300 8019 00		8	8	8	8	8	8	8	8	8	8	8	8	8	8	8	8	8	8	8																WASHER	
26	2202 7394 00		1	1	1	1	1	1																													MOTOR SUPPORT	
26	2202 2609 30								1	1	1	1	1	1	1	1	1	1	1	1	1																MOTOR SUPPORT	
27	0211 1325 03		4	4	4	4	4	4	4	4	4	4	4	4	4	4	4	4	4	4	4																SCREW	
28	2202 8320 00		1	1	1	1	1	1	1	1	1	1	1	1	1	1	1	1	1	1	1																PULLEY SCREW	
28	2202 2608 49			1	1	1	1	1	1	1	1	1	1	1	1	1	1	1	1	1	1																PULLEY SCREW	
29	2200 7231 30		1	1	1	1	1	1	1	1	1	1	1	1	1	1	1	1	1	1	1																NUT	
30	0367 0100 58		1	1	1	1	1	1	1	1	1	1	1	1	1	1	1	1	1	1	1																BELT	
30	0367 0100 57			1	1	1	1	1	1	1	1	1	1	1	1	1	1	1	1	1	1																BELT	
31	2202 2608 48								1	1	1	1	1	1	1	1	1	1	1	1	1																PULLEY MOTOR	
31	2202 2608 47								1	1	1	1	1	1	1	1	1	1	1	1	1																	PULLEY MOTOR
32	2202 2610 17								1	1	1	1	1	1	1	1	1	1	1	1	1																	FAN HUB
33	2200 9005 32								1	1	1	1	1	1	1	1	1	1	1	1	1																	FAN
34	0333 4232 00								1	1	1	1	1	1	1	1	1	1	1	1	1																	WASHER
35	0147 1964 66								1	1	1	1	1	1	1	1	1	1	1	1	1																	SCREW
36	0333 3100 17								7	7	7	7	7	7	7	7	7	7	7	7	7																	WASHER
36a	0333 4232 00		4	4	4	4	4	4																													WASHER	
37	0215 0003 92								7	7	7	7	7	7	7	7	7	7	7	7	7																	SCREW
37a	0147 1362 03		4	4	4	4	4	4																													SCREW	
38	2202 2609 54		1	1	1	1	1	1	1	1	1	1	1	1	1	1	1	1	1	1	1																FLEXIBLE TUBE	
39	0392 1100 15		1	1	1	1	1	1	1	1	1	1	1	1	1	1	1	1	1	1	1																VIBR. DAMPER	
40	0147 1320 03								4	4	4	4	4	4	4	4	4	4	4	4	4																	SCREW

Dwg. 6		Screw compressor and electric motor metal support-Transmission - Intake filter																						DESCRIPTION		
Ref. No	Part. num.	Note	Q.ty																							
			HP 7,5 - kW 5,5																							
41	0333 3100 17																								WASHER	
42	2200 5997 99		1	1	1	1	1	1	1	1	1	1	1	1	1	1	1	1	1	1	1	1	1	1	CHECK VALVE	
43	1619 5337 03						2	2	2	2	2	2	2	2	2	2	2	2	2	2	2	2	2	2	SCREW	
44	0266 2110 00						4	4	4	4	4	4	4	4	4	4	4	4	4	4	4	4	4	4	NUT	
46	0211 1246 03		3	3	3	3	3	3	3	3	3	3	3	3	3	3	3	3	3	3	3	3	3	3	SCREW	
47	0663 2112 75		1	1	1	1	1	1	1	1	1	1	1	1	1	1	1	1	1	1	1	1	1	1	O-RING	
48	0266 2110 00		4	4	4	4	4	2	2	2	2	2	2	2	2	2	2	2	2	2	2	2	2	2	NUT	
49	0333 3100 17		4	4	4	4	4	2	2	2	2	2	2	2	2	2	2	2	2	2	2	2	2	2	WASHER	
51	0324 1550 08		1	1	1	1	1	1	1	1	1	1	1	1	1	1	1	1	1	1	1	1	1	1	SPACER	
50	2202 7487 00		1	1	1	1	1	1																	SPACING SCREW	
52	0392 1100 06		2	2	2	2	2	2																	VIBR. DAMPER	
53	0392 1100 23		2	2	2	2	2	2																	VIBR. DAMPER	
54	0147 1363 03		2	2	2	2	2	2																	SCREW	
55	0300 0274 17		2	2	2	2	2	2																	WASHER	
56	2202 7484 00		1	1	1	1	1																		PULLEY MOTOR	
56	2202 7484 01		1	1	1	1	1																		PULLEY MOTOR	
57	2202 7488 00		1	1	1	1	1	1																	SPACER	
58	0194 1319 00		1	1	1	1	1	1																	SCREW	
59	2202 7489 00		1	1	1	1	1	1																	SPACER FOR FAN	
60	2202 7490 00		1	1	1	1	1	1																	FAN	
61	0333 4232 00		1	1	1	1	1	1																	WASHER	
62	0147 1963 48		1	1	1	1	1	1																	SCREW	
63	0337 0009 57		1	1	1	1	1	1																	PARALLEL KEY	
64	2202 9829 00		1	1	1	1	1	1																	UNLOADER ASSEMBLY (2nd Serie see Dwg. 7)	
64a	0663 2112 75		1	1	1	1	1	1																	O-RING	
65	0070 7250 07		X	X	X	X	X	X																	HOSE (IN METERS)	
66	0070 6002 48		X	X	X	X	X	X																	HOSE (IN METERS)	
67	9740 2004 31		1	1	1	1	1	1																	ELBOW UNION	
68	9740 2004 32		X	X	X	X	X	X																	ELBOW UNION	
69	2202 7639 01		1	1	1	1	1	1																	ELBOW UNION	
70	2202 2608 41						1	1	1	1	1	1	1	1	1	1	1	1	1	1	1	1	1	1	UNLOADER ASSEMBLY (2nd Serie)	
70a	0663 2112 75						1	1	1	1	1	1	1	1	1	1	1	1	1	1	1	1	1	1	O-RING	
71	2200 5997 99						1	1	1	1	1	1	1	1	1	1	1	1	1	1	1	1	1	1	CHECK VALVE	
72	0070 6002 48						1	1	1	1	1	1	1	1	1	1	1	1	1	1	1	1	1	1	HOSE (IN METERS)	
73	9740 2004 32						1	1	1	1	1	1	1	1	1	1	1	1	1	1	1	1	1	1	ELBOW UNION	
74	0583 8310 01						1	1	1	1	1	1	1	1	1	1	1	1	1	1	1	1	1	1	COUPLING	
75	2202 9819 00						1	1	1	1	1	1	1	1	1	1	1	1	1	1	1	1	1	1	NOZZLE	
<b>Note B: If Ref. 4 are replaced just for the 1st Serie, supply KIT Cod. 2200902398 for Modd. 230V 60HZ:                  4152010164, 4152010165, 4152010170, 4152010171, 4152010176, 4152010177.</b>																										





2nd Serie  
Beginning from the serial number  
CAI 464321  
for Modd.  
4152010162, 4152010163, 4152010168,  
4152010169, 4152010174, 4152010175,  
4152010164, 4152010165, 4152010170,  
4152010171, 4152010176, 4152010177.



Dwg. 7

Unloader for single-phase "230V 60Hz"

Q.ty

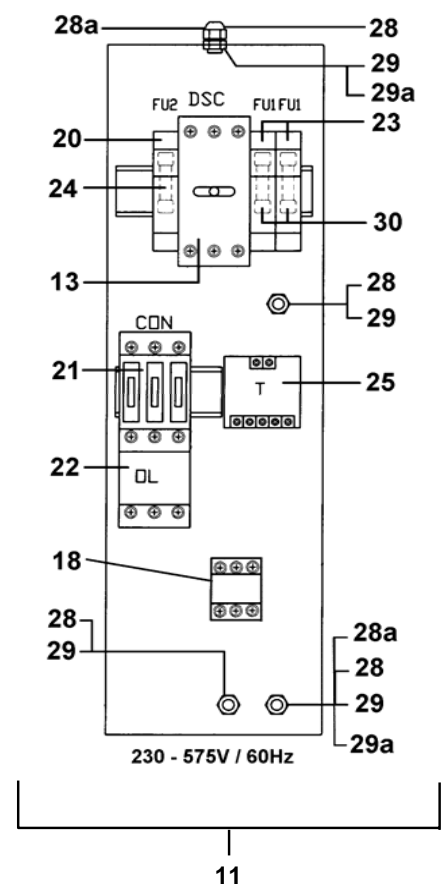
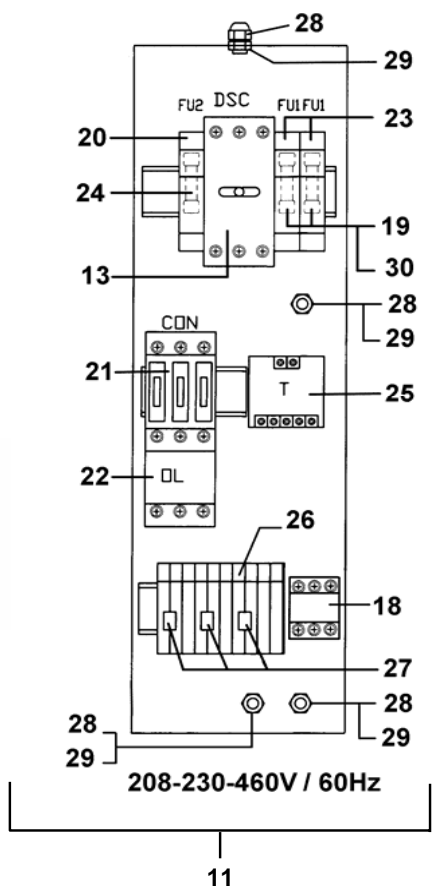
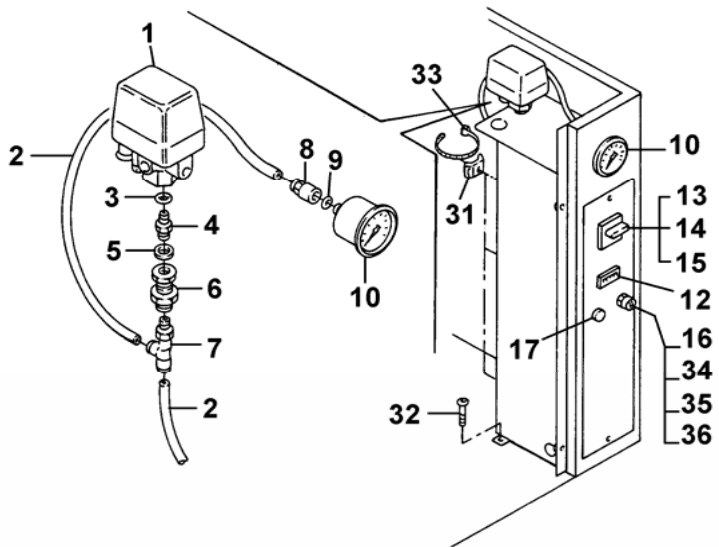
HP 5 - kW 3,7

HP 7,5 - kW 5,5

DESCRIPTION

Ref. No	Part. num.	Note	Q.ty																			DESCRIPTION																										
			HP 5 - kW 3,7										HP 7,5 - kW 5,5																																			
			4152 0101 62																			4152 0101 64																										
1	2202 9829 00		1	1	1	1	1	1	1	1	1	1	1	1	1	1	1	1	1	1	1	1	1	1	1	1	1	1	1	1	1	1	1	1	1	1	1	UNLOADER ASSEMBLY										
1a	0663 2112 75		1	1	1	1	1	1	1	1	1	1	1	1	1	1	1	1	1	1	1	1	1	1	1	1	1	1	1	1	1	1	1	1	1	1	1	O-RING										
3	0070 7250 07		X	X	X	X	X	X	X	X	X	X	X	X	X	X	X	X	X	X	X	X	X	X	X	X	X	X	X	X	X	X	X	X	X	X	X	HOSE (IN METERS)										
4	0070 6002 48		X	X	X	X	X	X	X	X	X	X	X	X	X	X	X	X	X	X	X	X	X	X	X	X	X	X	X	X	X	X	X	X	X	X	X	X	HOSE (IN METERS)									
5	9740 2004 31		1	1	1	1	1	1	1	1	1	1	1	1	1	1	1	1	1	1	1	1	1	1	1	1	1	1	1	1	1	1	1	1	1	1	1	1	ELBOW UNION									
6	9740 2004 32		1	1	1	1	1	1	1	1	1	1	1	1	1	1	1	1	1	1	1	1	1	1	1	1	1	1	1	1	1	1	1	1	1	1	1	1	ELBOW UNION									
7	2202 7639 01		1	1	1	1	1	1	1	1	1	1	1	1	1	1	1	1	1	1	1	1	1	1	1	1	1	1	1	1	1	1	1	1	1	1	1	1	ELBOW UNION									
8	2202 9819 00		1	1	1	1	1	1	1	1	1	1	1	1	1	1	1	1	1	1	1	1	1	1	1	1	1	1	1	1	1	1	1	1	1	1	1	1	NOZZLE									
9	2200 5997 99		1	1	1	1	1	1	1	1	1	1	1	1	1	1	1	1	1	1	1	1	1	1	1	1	1	1	1	1	1	1	1	1	1	1	1	1	CHECK VALVE									
10	2200 7507 76		1	1	1	1	1	1	1	1	1	1	1	1	1	1	1	1	1	1	1	1	1	1	1	1	1	1	1	1	1	1	1	1	1	1	1	1	REDUCTION									
11	2200 9023 96		1	1	1	1	1	1	1	1	1	1	1	1	1	1	1	1	1	1	1	1	1	1	1	1	1	1	1	1	1	1	1	1	1	1	1	1	KIT VALVE REGULATOR									
12	2200 9023 97		1	1	1	1	1	1	1	1	1	1	1	1	1	1	1	1	1	1	1	1	1	1	1	1	1	1	1	1	1	1	1	1	1	1	1	1	KIT SOLENOID VALVE									

Dwg. 8 - Electric board control panel

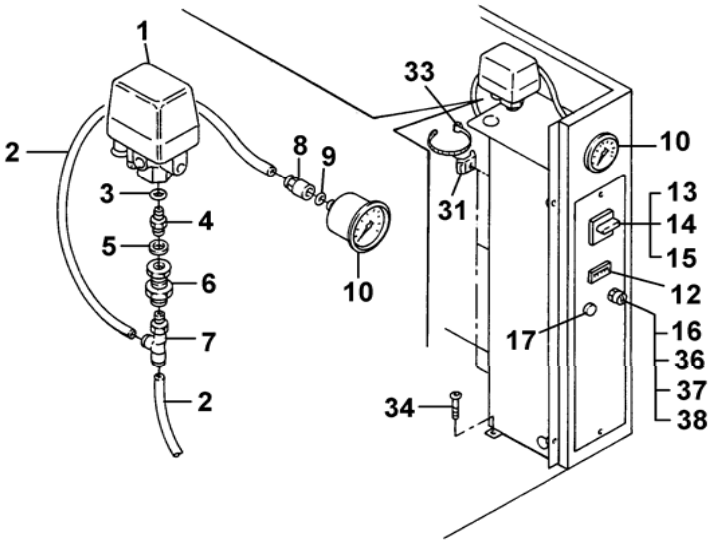




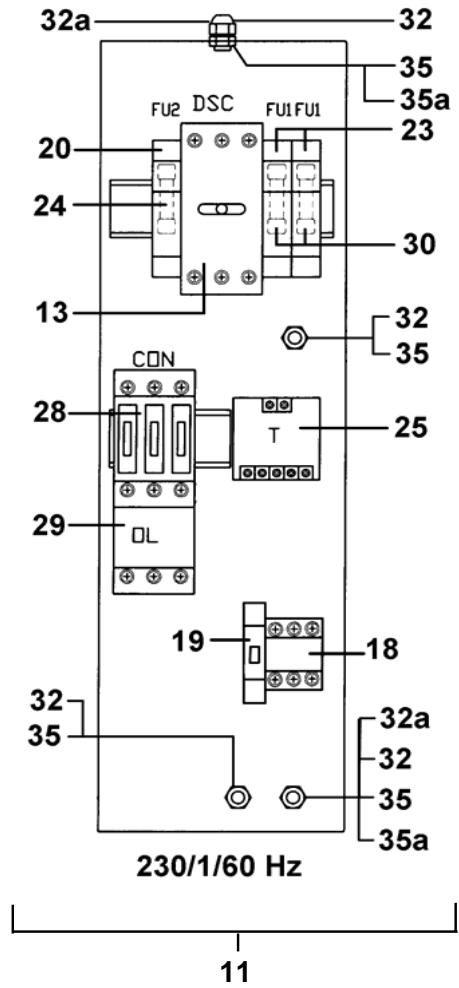




Dwg. 9 - Electric board control panel ( for 230-1-60 Hz )



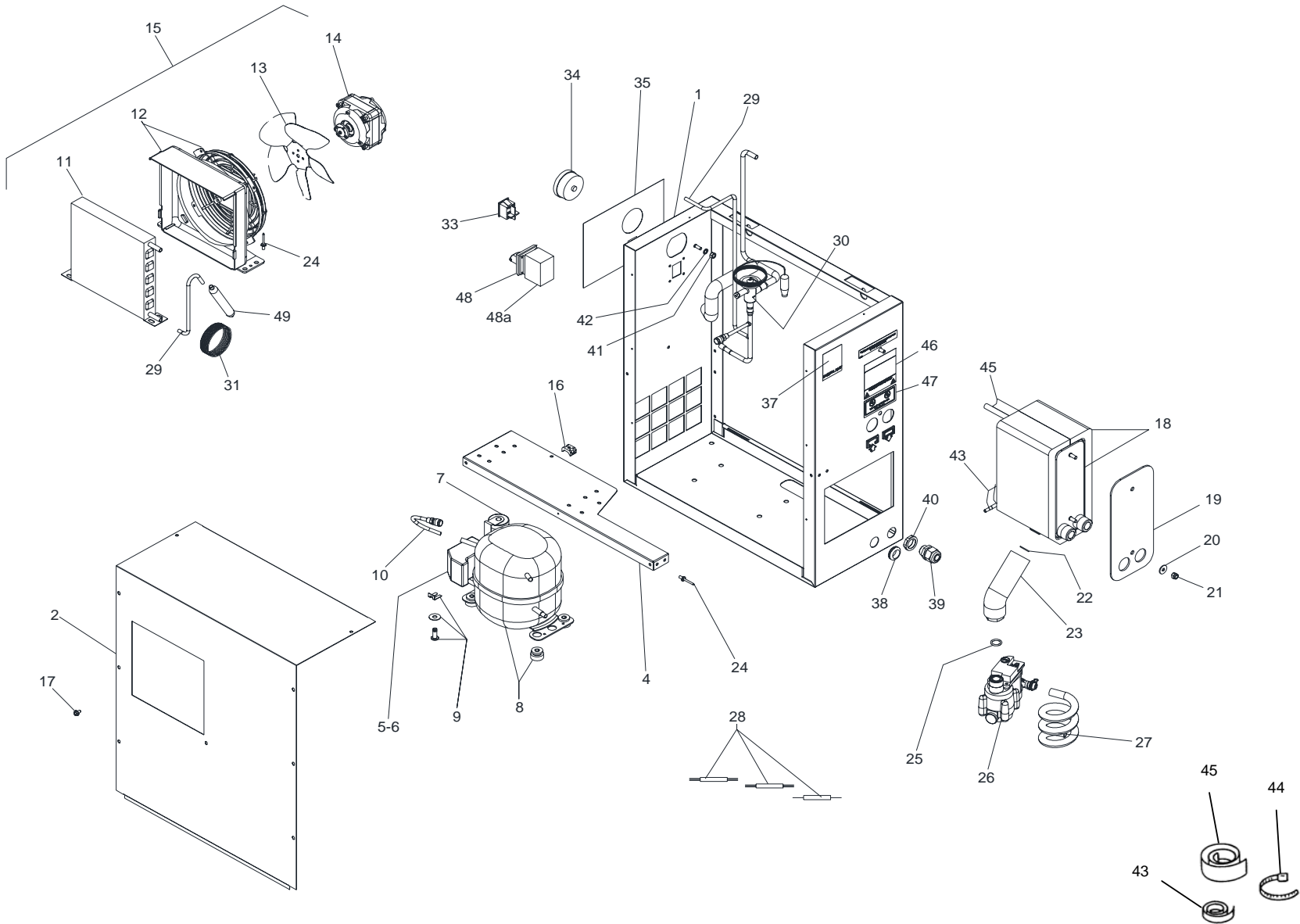
Beginning from the serial number  
 CAI 464321  
 for Modd.  
 4152010162, 4152010163, 4152010168,  
 4152010169, 4152010174, 4152010175,  
 4152010164, 4152010165, 4152010170,  
 4152010171, 4152010176, 4152010177.



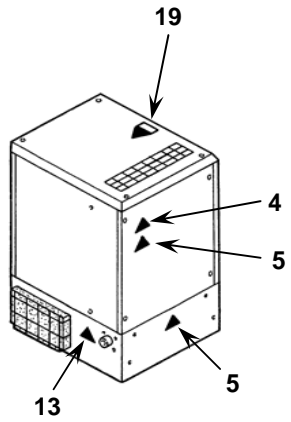
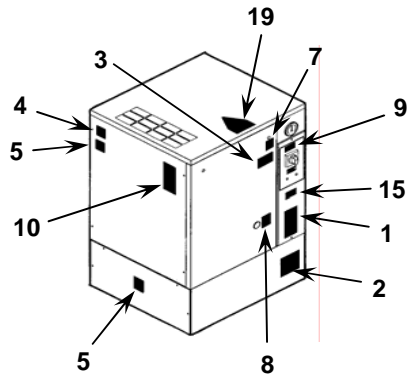
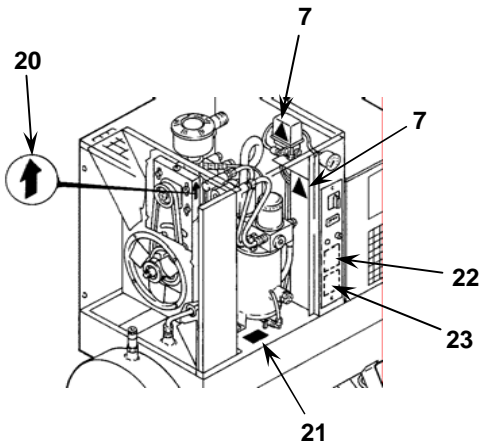
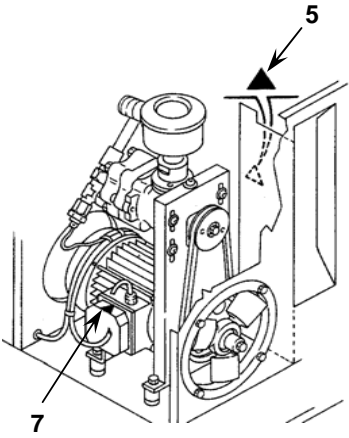
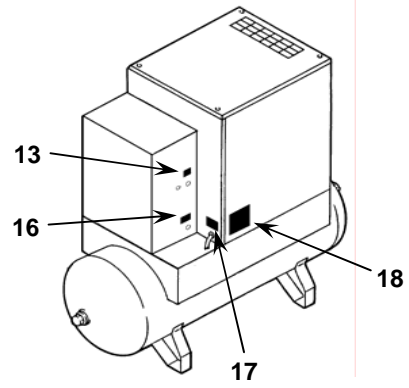
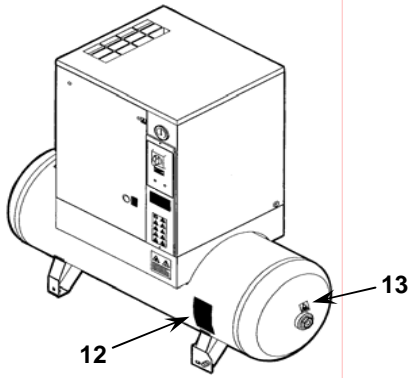
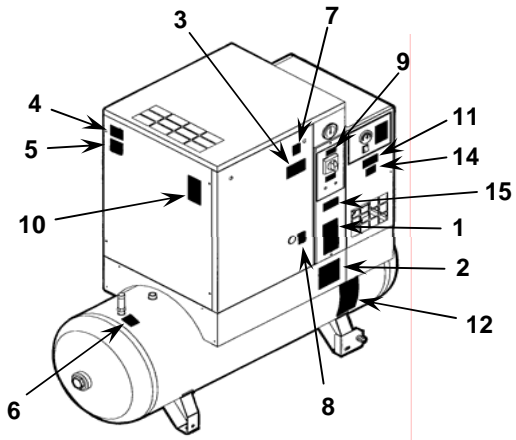




Dwg. 10 - Air dryer













Dwg. 12

SERVICE KITS					
<b>Kit ( 2000 Hours )</b>					
<b>Air-Oil filters</b>					
Code	Dwg.	Ref.	Description		
2200 9023 00	6	2	AIR FILTER		
	4	17	OIL FILTER		
<b>Kit ( 4000 Hours )</b>					
<b>Air-oil filters, oil separator</b>					
Code	Dwg.	Ref.	Description		
2200 9023 01	6	2	AIR FILTER		
	4	17	OIL FILTER		
	4	18	CARTRIDGE		
<b>Kit ( 8000 Hours )</b>					
<b>Air-Oil filters-Oil separator-Thermostatic valve-min. press. valve-Suction unit asseby</b>					
Code	Dwg.	Ref.	Description		
2200 9023 93	6	2	AIR FILTER		
	4	17	OIL FILTER		
	4	18	CARTRIDGE		
	4	6	THERMOSTATIC VALVE-MIN. PRESS. VALVE		
	6	4	SUCTION UNIT ASSEMBLY		
<b>Kit ( 8000 Hours ) Beginning from the serial number CAI 464321 HP 5,5 kW 4 / HP 7,5 kW 5,5 for compressor 230-1-60 Hz</b>					
<b>Air-Oil filters-Oil separator-Thermostatic valve-min. press. valve-Suction unit asseby</b>					
Code	Dwg.	Ref.	Description		
2200 9023 99	6	2	AIR FILTER		
	4	17	OIL FILTER		
	4	18	CARTRIDGE		
	4	6	THERMOSTATIC VALVE-MIN. PRESS. VALVE		
	7	11	SUCTION UNIT KIT		
<b>Kit ( 8000 Hours ) for Modd. HP 3 kW 2,2 (230V 60Hz / 208-230-460V 60Hz / 575V 60Hz) HP 5 kW 3,7 (208-230-460V 60Hz / 575V 60Hz) HP 7,5 kW 5,5 (208-230-460V 60Hz / 575V 60Hz)</b>					
<b>Air-Oil filters-Oil separator-Thermostatic valve-min. press. valve-Suction unit asseby</b>					
Code	Dwg.	Ref.	Description		
2200 9023 02	6	2	AIR FILTER		
	4	17	OIL FILTER		
	4	18	CARTRIDGE		
	4	6	THERMOSTATIC VALVE-MIN. PRESS. VALVE		
	6	70	SUCTION UNIT ASSEMBLY		
<b>Seal kit for instrument block connections</b>					
Code	Dwg.	Ref.	Description		
2901 1097 00	4	5	WASHER		
	4	8	WASHER		
	4	10	WASHER		
	4	20	WASHER		
	4	21	WASHER		
	4	25	WASHER		
	4	33	O-RING		
	4	34	O-RING		
<b>Rotair</b>					
Code	Description				
6215 7140 00	OIL ROTAIR ( 5 L )				
6215 7141 00	OIL ROTAIR ( 20 L )				





**Tab. driving belt**

HP / kW	bar (psi)	50 Hz		60 Hz		NOTE		
		Code	Q.ty	Code	Q.ty			
3 / 2,2	8 (116)			0367 0100 56	1			
	10 (145)			0367 0100 55	1			
5 / 3,7	8 (116)			0367 0100 63	1			
	10 (145)			0367 0100 55	1			
7,5 / 5,5	8 (116)			0367 0100 58	1			
	10 (145)			0367 0100 57	1			



